

From the Editor's Desk

275 **Real-world practice**

The Nerve! Readers Speak

276 **Reader Response: Practice Current: How do you treat neuromyelitis optica?**

Jagannadha Avasarala

276 **Author Response: Practice Current: How do you treat neuromyelitis optica?**

Aravind Ganesh

277 **Reader Response: Uncertainties from a worldwide survey on antiepileptic drug withdrawal after seizure remission**

Nitin K. Sethi

277 **Author Response: Uncertainties from a worldwide survey on antiepileptic drug withdrawal after seizure remission**

Luca Bartolini

Editorials

279 **Patients are harmed by physician burnout**

James L. Bernat and Neil A. Busis

281 **"Waiting for placement?": Waiting for solutions**

John P. Ney and Allison L. Weathers

Research

283 **Increased prevalence of brain tumors classified as T2 hyperintensities in neurofibromatosis 1**

Jennifer L. Griffith, Stephanie M. Morris, Jasia Mahdi, Manu S. Goyal, Tamara Hershey, and David H. Gutmann

292 **Discontinuation and comparative effectiveness of dimethyl fumarate and fingolimod in 2 centers**

Brandi Vollmer, Daniel Ontaneda, Anasua Bandyopadhyay, Sam Cohn, Kavita Nair, Stefan Sillau, Robert A. Bermel, John R. Corboy, Robert J. Fox, Timothy Vollmer, Jeffrey A. Cohen, Enrique Alvarez, and Carrie M. Hersh

[Open Access](#)

302 **Post-acute care discharge delays for neurology inpatients: Opportunity to improve patient flow**

Debra E. Roberts, Robert G. Holloway, and Benjamin P. George

[Editorial, p. 281](#)

➔ Ahead of Print Articles and Editorials

Available online at Neurology.org/CP

Continued

311 **Traumatic and spontaneous intracranial hemorrhage in atrial fibrillation patients on warfarin**

Heidi Lehtola, Antti Palomäki, Pirjo Mustonen, Päivi Hartikainen, Tuomas Kiviniemi, Henri Sallinen, Ilpo Nuotio, Antti Ylitalo, K.E. Juhani Airaksinen, and Juha Hartikainen

318 **Diagnoses and other predictors of patient absenteeism in an outpatient neurology clinic**

David H. Do and James E. Siegler

327 **Safety and efficacy of plasma exchange in pediatric transverse myelitis**

Daniel K. Noland and Benjamin M. Greenberg

➔ Class of Evidence 🎧 Podcast

Reviews

331 **Antiepileptic drugs and suicide-related behavior: Is it the drug or comorbidity?**

Hari K. Raju Sagiraju, Chen-Pin Wang, Megan E. Amuan, Anne C. Van Cott, Hamada H. Altalib, and Mary Jo V. Pugh

340 **FACETS of health disparities in epilepsy surgery and gaps that need to be addressed**

Cody L. Nathan and Camilo Gutierrez

Commentary

346 **The burnout patient**

Stephen M. Sergay

➔ Editorial, p. 279

Cases

349 **Autoimmune limbic encephalitis in association with acute stroke**

Bonnie Kaas, Steven R. Zeiler, Mona N. Bahouth, Rafael H. Llinas, and John C. Probasco

352 **Rare presentation of essential lingual myoclonus**

Krupali Patel and Anwar Tappuni

➔ Video

354 **Arc de cercle as a manifestation of focal epileptic seizures**

Elia M. Pestana Knight, Olesya Grinenko, Juan Bulacio, William Bingaman, Ajay Gupta, and Patrick Chauvel

357 **Overshunting-associated myelopathy: Flattened spinal cord compressed by epidural venous plexus**

Junpei Koge, Yukihiko Nakamura, Tetsuya Hashimoto, Eri Tanaka, Masakazu Kawajiri, and Takeshi Yamada

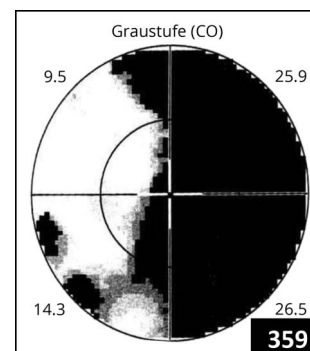
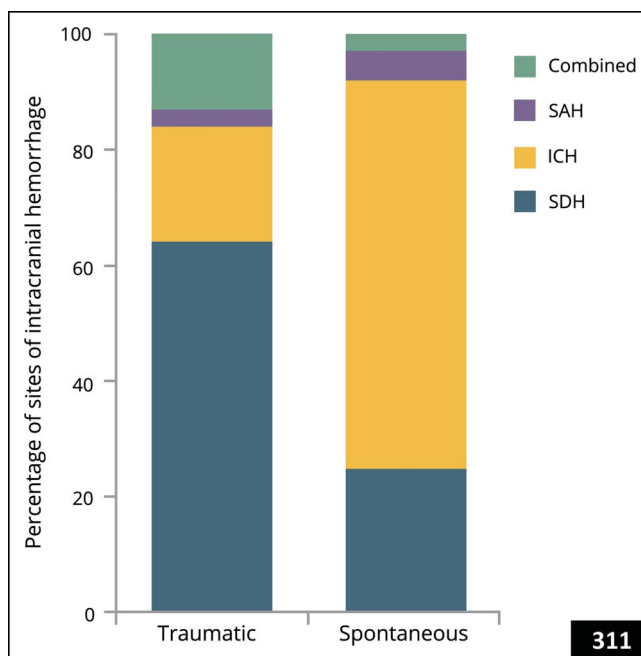
359 **Challenges of diagnosing and treating Charles Bonnet syndrome**

Maximilian Franke, Lisa Rauschenberger, and Felix Fluri

Corrections

278 **A practical approach to detection and treatment of depression in Parkinson disease and dementia**

278 **What predicts falls in Parkinson disease? Observations from the Parkinson’s Foundation Registry**



Neurology® Clinical Practice

8 (4)

Neurol Clin Pract 2018;8;275-361

This information is current as of January 1, 2018

Updated Information & Services	including high resolution figures, can be found at: http://cp.neurology.org/content/8/4.citation.full.html
Permissions & Licensing	Information about reproducing this article in parts (figures,tables) or in its entirety can be found online at: http://cp.neurology.org/misc/about.xhtml#permissions
Reprints	Information about ordering reprints can be found online: http://cp.neurology.org/misc/addir.xhtml#reprintsus

Neurol Clin Pract is an official journal of the American Academy of Neurology. Published continuously since 2011, it is now a bimonthly with 6 issues per year. Copyright . All rights reserved. Print ISSN: 2163-0402. Online ISSN: 2163-0933.

