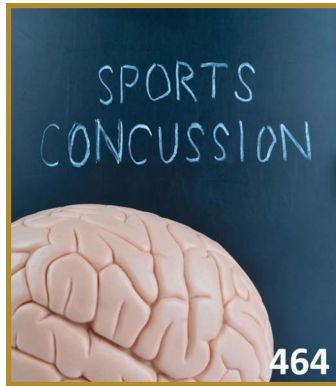


Table of Contents



464

From the Editor's Desk..... 457

Editorials

Student-run clinics: The future of outpatient neurology practice? 458

Tissa Wijeratne, Essie Low, and Sheila Crewther

Potential and pitfalls of email control as a burnout antidote 462

Saty Satya-Murti and Allison L. Weathers



474

Research

King-Devick Test identifies real-time concussion and asymptomatic concussion in youth athletes 464

Priya S. Dhawan, Danielle Leong, Lisa Tapsell, Amaal J. Starling, Steven L. Galetta, Laura J. Balcer, Trenton L. Overall, Jennifer S. Adler, Rashmi B. Halker-Singh, Bert B. Vargas, and David Dodick

Incorporating students into clinic may be associated with both improved clinical productivity and educational value..... 474

Jeremy A. Tanner, Karthik T. Rao, Rachel E. Salas, Roy E. Strowd, Angeline M. Nguyen, Alexandra Kornbluh, Evan Mead-Brewer, and Charlene E. Gamaldo

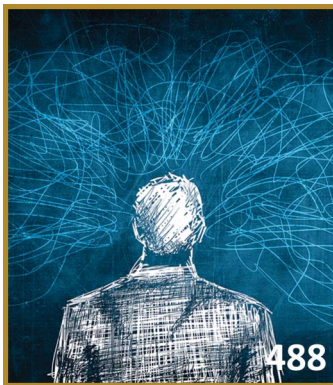
Editorial, p. 458



483

The upgoing thumb sign: An interobserver/ intraobserver reliability study 483

Shahram Abootalebi, Mahmoud Reza Azarpazhooh, Luciano Sposato, and Vladimir Hachinski



488

Progression and effect of cognitive-behavioral changes in patients with amyotrophic lateral sclerosis 488

Meredith Bock, Y.-Nhy Duong, Anthony Kim, Isabel Allen, Jennifer Murphy, and Catherine Lomen-Hoerth

Review

OPEN Recommendations for the detection and diagnosis of Niemann-Pick disease type C: An update 499

Marc C. Patterson, Peter Clayton, Paul Gissen, Mathieu Anheim, Peter Bauer, Olivier Bonnot, Andrea Dardis, Carlo Dionisi-Vici, Hans-Hermann Klünemann, Philippe Latour, Charles M. Lourenço, Daniel S. Ory, Alasdair Parker, Miguel Pocióvi, Michael Strupp, Marie T. Vanier, Mark Walterfang, and Thorsten Marquardt



512

Commentaries

Improving email strategies to target stress and productivity in clinical practice 512

Melissa J. Armstrong

Editorial, p. 462

“Think metabolic” in adults with diagnostic challenges: Biotinidase deficiency as a paradigm disorder 518

Barry Wolf

Cases

Ataxia and autonomic dysfunction as presenting symptoms in late-onset Alexander disease 523

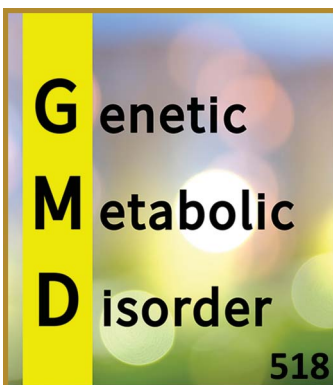
Meike Jost, Michel Rijntjes, Horst Urbach, Karl Egger, Philipp T. Meyer, Lars Frings, Cornelius Weiller, and Stephan Klebe

Powassan virus postencephalitic parkinsonism ... 527

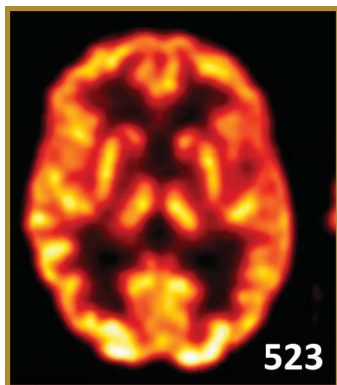
Shivam Om Mittal, Anhar Hassan, Joyce Sanchez, and Carrie Robertson

Transgender venous thrombosis 531

Amanda Opaskar, Eugene L. Scharf, Michael W. Chilungu, and Adam G. Kelly

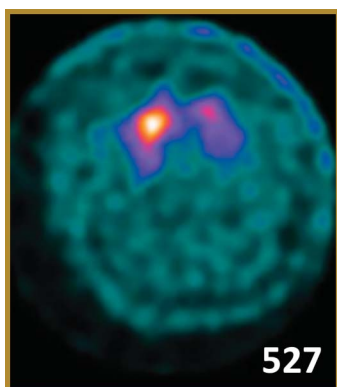


518



Efficacy of rituximab as third-line therapy in combined central and peripheral demyelination 534

Salvatore Savasta, Thomas Foadelli, Elisa Vegezzi, Andrea Cortese, Alessandro Lozza, Anna Pichiecchio, Diego Franciotta, and Enrico Marchioni



Spontaneous periodic hypothermia in Parkinson disease with hypothalamic involvement..... 538

Vijay Renga, William F. Hickey, and James L. Bernat

Thrombolysis of a stroke patient with history of rtPA-associated angioedema 541

Felipe De Los Rios La Rosa, Amy K. Starosciak, and Brian Wolf



Neurologic attack and dynamic perfusion abnormality in neuronal intranuclear inclusion diseasee39

Koji Fujita, Yusuke Osaki, Ryosuke Miyamoto, Yoshimitsu Shimatani, Takashi Abe, Hiroyuki Sumikura, Shigeo Murayama, Yuishin Izumi, and Ryuji Kaji

Segmental arterial mediolysis: A rare cause of rapidly progressive arterial dissections.....e43

David A. Lapidus, Mazen S. Abusamaan, Jonathan J. Davick, Aditya M. Sharma, James W. Mandell, M. Beatriz S. Lopes, J. Javier Provencio, Bradford B. Worrall, and Andrew M. Southerland

Small fiber neuropathy presenting during the antecedent period of undifferentiated arthritis prior to rheumatoid arthritis.....e47

Julius Birnbaum

Publication Information

Neurology® is a registered trademark of the American Academy of Neurology (registration valid in the United States). *Neurology*® Clinical Practice (ISSN 2163-0402) is published 6 times per year for the American Academy of Neurology, 201 Chicago Avenue, Minneapolis, MN 55415, by Wolters Kluwer Health, Inc. at 14700 Citicorp Drive, Bldg 3, Hagerstown, MD 21742. Business offices are located at Two Commerce Square, 2001 Market St., Philadelphia, PA 19103. Production offices are located at 351 West Camden Street, Baltimore, MD 21201-2436. © 2017 American Academy of Neurology.

Annual Subscription Rates: United States: \$419.00 Individual, \$863.00 Institution, \$140.00 In-training. Outside the United States: \$426.00 Individual, \$870.00 Institution, \$147.00 In-training. Single copy rate \$144.00. United States residents of AL, CO, DC, FL, GA, HI, IA, ID, IN, KS, KY, LA, MD, MO, ND, NM, NV, PR, RI, SC, SD, UT, VT, WA, WV add state sales tax. The GST tax of 7% must be added to all orders shipped to Canada (Wolters Kluwer's GST Identification #895524239, Publications Mail Agreement #1119672). Subscription prices outside the United States must be prepaid. Prices subject to change without notice. Visit us online at shop.lww.com.

Individual and in-training subscription rates include print and access to the online version. Institutional online subscriptions can be purchased through Ovid by contacting the publisher. Please contact Wolters Kluwer, Wolters Kluwer Health, Inc. at 14700 Citicorp Drive, Bldg 3, Hagerstown, MD 21742; phone 800-638-3030 (outside the United States 301-223-2300); fax 301-223-2400.

Address for non-member subscription information, orders, or change of address (except Japan): Wolters Kluwer Health, Inc., 14700 Citicorp Drive, Bldg 3, Hagerstown, MD 21742; phone 800-638-3030; fax 301-223-2400. In Japan, contact Wolters Kluwer Health Japan Co., Ltd., Forecast Mita Building 5th floor, 1-3-31 Mita Minato-ku, Tokyo, Japan 108-0073; phone: +81 3 5427 1969; e-mail: journal@wkjapan.co.jp.

Address for member subscription information, orders, or change of address: *Neurology: Clinical Practice* is a benefit of membership to the American Academy of Neurology. To become a member or provide a change of address, please contact the American Academy of Neurology, 201 Chicago Avenue, Minneapolis, MN 55415 (or call 612-928-6000). For all other membership inquiries, contact Wolters Kluwer Customer Service Department, P.O. Box 1610, Hagerstown, MD 21740; phone 800-638-3030 (outside the United States 301-223-2300); fax 301-223-2400; e-mail memberservice@lww.com. Please indicate training status and name of institution. Institutional rates apply to libraries, hospitals, corporations, and partnerships of three or more individuals. Prices are subject to change without notice. Subscriptions will begin with currently available issue unless otherwise requested. Copies will be replaced without charge if the publisher receives a request within 90 days of the mailing date.

Copyright and Permission Information: No portion(s) of the work(s) may be reproduced without written consent from Wolters Kluwer. Permission to reproduce copies of articles for non-commercial and commercial use may be obtained from Rightslink which can be found at the article level under Request Permission. Alternatively, send an email to Permissions@LWW.com. General information about permissions can be found on <https://shop.lww.com/journal-permission>.

Disclaimer: Opinions expressed by the authors and advertisers are not necessarily those of the American Academy of Neurology, its affiliates, or of the Publisher. The American Academy of Neurology, its affiliates, and the Publisher disclaim any liability to any party for the accuracy, completeness, efficacy, or availability of the material contained in this publication (including drug dosages) or for any damages arising out of the use or non-use of any of the material contained in this publication.

Advertising Sales Representatives: Wolters Kluwer, 333 Seventh Avenue, New York, NY 10001. Contacts: Eileen Henry, tel: 732-778-2261, fax: 973-215-2485, Eileen.Henry@wolterskluwer.com and Elizabeth S. Hall, tel: 267-804-8123, liz.hall@wolterskluwer.com. In Europe: Avia Potashnik, Wolters Kluwer, 250 Waterloo Road, London SE1 8RD, UK, tel: +44 (0) 207 981 0722, fax: 44 7919 397 933, Avia. Potashnik@wolterskluwer.com.

Careers & Events: Monique McLaughlin, Wolters Kluwer, Two Commerce Square, 2001 Market Street, Philadelphia, PA 19103, tel: (215) 521-8468, fax: 215-521-8801, Monique.Mclaughlin@wolterskluwer.com.

Reprints: Meredith Edelman, Commercial Reprint Sales, Wolters Kluwer, Two Commerce Square, 2001 Market Street, Philadelphia, PA 19103, tel: 215-356-2721; meredith.edelman@wolterskluwer.com; reprintsolutions@wolterskluwer.com.

Special Projects: US & Canada: Alan Moore, Wolters Kluwer, Two Commerce Square, 2001 Market Street, Philadelphia, PA 19103, tel: 215-521-8638, Alan.Moore@wolterskluwer.com. International: Andrew Wible, Senior Manager, Rights, Licensing, and Partnerships, Wolters Kluwer, translationrights@wolterskluwer.com.

Postmaster: Send address changes to *Neurology: Clinical Practice*, P.O. Box 1610, Hagerstown, MD 21740

Neurology[®] Clinical Practice

7 (6)

Neurol Clin Pract 2017;7:e47-543

This information is current as of January 1, 2017

Updated Information & Services

including high resolution figures, can be found at:
<http://cp.neurology.org/content/7/6.citation.full.html>

Permissions & Licensing

Information about reproducing this article in parts (figures, tables) or in its entirety can be found online at:
<http://cp.neurology.org/misc/about.xhtml#permissions>

Reprints

Information about ordering reprints can be found online:
<http://cp.neurology.org/misc/addir.xhtml#reprintsus>

Neurol Clin Pract is an official journal of the American Academy of Neurology. Published continuously since 2011, it is now a bimonthly with 6 issues per year. Copyright . All rights reserved. Print ISSN: 2163-0402. Online ISSN: 2163-0933.

