

Table of Contents



From the Editor's Desk..... **279**

Editorial

**Head injury while on anticoagulation:
Small numbers, big risks** **280**

Katherine I. Nearing and Jack W. Tsao

Research

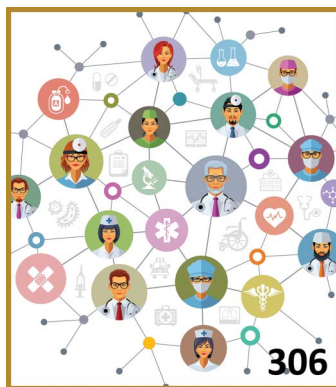
**Virtual visits for Parkinson disease:
A multicenter noncontrolled cohort** **283**

Ryan E. Korn, Aparna Wagle Shukla, Maya Katz, H. Tait Keenan, Steven Goldenthal, Peggy Auinger, William Zhu, Michael Dodge, Kyle Rizer, Meredith A. Achey, Erica Byrd, Richard Barbano, Irene Richard, Kelly L. Andrzejewski, Heidi B. Schwarz, E. Ray Dorsey, Kevin M. Biglan, Gail Kang, Sulada Kanchana, Ramon Rodriguez, Caroline M. Tanner, and Nicholas B. Galifianakis

**Mild brain injury and anticoagulants:
Less is enough** **296**

Laura Campiglio, Francesca Bianchi, Claudio Cattalini, Daniela Belvedere, Chiara Emilia Rosci, Chiara Livia Casellato, Manuela Secchi, Maria Cristina Saetti, Elena Baratelli, Alessandro Innocenti, Ilaria Cova, Chiara Gambini, Luca Romano, Gaia Oggioni, Rossella Pagani, Marco Gardinali, and Alberto Priori

Editorial, p. 280



OPEN **Effect of integrated community neurology
on utilization, diagnostic testing, and
access** **306**

Muhamad Y. Elrashidi, Lindsey M. Philpot, Nathan P. Young, Priya Ramar, Kristi M. Swanson, Paul M. McKie, Sarah J. Crane, and Jon O. Ebbert





Swallow-induced syncope in 5 patients: Electrophysiologic evaluation during swallowing 316

Ibrahim Aydogdu, Can Hasdemir, Ahmet Acarer, Sezin Alpaydin, and Cumhur Ertekin

Frequency, determinants, and effects of early seizures after thrombolysis for acute ischemic stroke: The ENCHANTED trial 324

Ying Xu, Maree L. Hackett, John Chalmers, Richard I. Lindley, Xia Wang, Qiang Li, Thompson Robinson, Hisatomi Arima, Pablo M. Lavados, Craig S. Anderson, For the ENCHANTED Study Group

Perspectives on marijuana use and effectiveness: A survey of NARCOMS participants 333

Stacey S. Cofield, Amber Salter, Tuula Tyry, Christina Crowe, Gary R. Cutter, Robert J. Fox, and Ruth Ann Marrie



Reviews

Online tools for individuals with depression and neurologic conditions: A scoping review 344

Sara Lukmanji, Tram Pham, Laura Blaikie, Callie Clark, Nathalie Jetté, Samuel Wiebe, Andrew Bulloch, Jayna Holroyd-Leduc, Sophia Macrodimitris, Aaron Mackie, and Scott B. Patten

Wearable biosensors to monitor disability in multiple sclerosis 354

Michael J. Bradshaw, Samantha Farrow, Robert W. Motl, and Tanuja Chitnis



Commentaries

Practice Current: How do you treat epilepsy in pregnancy? 363

Ilena C. George

Neurologists should endorse active transportation for their patients 372

Daniel Foster

Corrections

- Pimavanserin: A novel therapeutic option for Parkinson disease psychosis **282**
- Acute hemichorea as unusual first multiple sclerosis presentation **282**

Cases

- Adult-onset dystonia with marfanoid features.....**e31**
Scott A. Norris, Anja Pogarcic, Matt Hicks, Joel S. Perlmutter, and Marwan Shinawi
- Pure lemniscal sensory stroke**e35**
Antonio Carota, Anne-Sophie Knoepfli, and Julien Bogousslavsky
- Progressive ataxia and palatal tremor**e37**
Clotilde Hainline, Andreas Neophytides, Maria J. Borja, and Steven L. Galetta

Publication Information

Neurology® is a registered trademark of the American Academy of Neurology (registration valid in the United States). *Neurology*® Clinical Practice (ISSN 2163-0402) is published 6 times per year for the American Academy of Neurology, 201 Chicago Avenue, Minneapolis, MN 55415, by Wolters Kluwer Health, Inc. at 14700 Citicorp Drive, Bldg 3, Hagerstown, MD 21742. Business offices are located at Two Commerce Square, 2001 Market St., Philadelphia, PA 19103. Production offices are located at 351 West Camden Street, Baltimore, MD 21201-2436. © 2017 American Academy of Neurology.

Annual Subscription Rates: United States: \$378.00 Individual, \$766.00 Institution, \$133.00 In-training. Outside the United States: \$418.00 Individual, \$772.00 Institution, \$139.00 In-training. Single copy rate \$128.00. United States residents of AL, CO, DC, FL, GA, HI, IA, ID, IN, KS, KY, LA, MD, MO, ND, NM, NV, PR, RI, SC, SD, UT, VT, WA, WV add state sales tax. The GST tax of 7% must be added to all orders shipped to Canada (Wolters Kluwer's GST Identification #895524239, Publications Mail Agreement #1119672). Subscription prices outside the United States must be prepaid. Prices subject to change without notice. Visit us online at www.lww.com.

Individual and in-training subscription rates include print and access to the online version. Institutional online subscriptions can be purchased through Ovid by contacting the publisher. Please contact Wolters Kluwer, Wolters Kluwer Health, Inc. at 14700 Citicorp Drive, Bldg 3, Hagerstown, MD 21742; phone 800-638-3030 (outside the United States 301-223-2300); fax 301-223-2400.

Address for non-member subscription information, orders, or change of address (except Japan): Wolters Kluwer Health, Inc., 14700 Citicorp Drive, Bldg 3, Hagerstown, MD 21742; phone 800-638-3030; fax 301-223-2400. In Japan, contact Wolters Kluwer Health Japan Co., Ltd., Forecast Mita Building 5th floor, 1-3-31 Mita Minato-ku, Tokyo, Japan 108-0073; phone: +81 3 5427 1969; e-mail: journal@wkjapan.co.jp.

Address for member subscription information, orders, or change of address: *Neurology: Clinical Practice* is a benefit of membership to the American Academy of Neurology. To become a member or provide a change of address, please contact the American Academy of Neurology, 201 Chicago Avenue, Minneapolis, MN 55415 (or call 612-928-6000). For all other membership inquiries, contact Wolters Kluwer Customer Service Department, P.O. Box 1610, Hagerstown, MD 21740; phone 800-638-3030 (outside the United States 301-223-2300); fax 301-223-2400; e-mail memberservice@lww.com. Please indicate training status and name of institution. Institutional rates apply to libraries, hospitals, corporations, and partnerships of three or more individuals. Prices are subject to change without notice. Subscriptions will begin with currently available issue unless otherwise requested. Copies will be replaced without charge if the publisher receives a request within 90 days of the mailing date.

Copyright and Permission Information: No portion(s) of the work(s) may be reproduced without written consent from Wolters Kluwer. Permission to reproduce copies of articles for non-commercial and commercial use may be obtained from Rightslink which can be found at the article level under Request Permission. Alternatively, send an email to healthpermissions@wolterskluwer.com. General information about permissions can be found on <https://www.lww.com/journal-permission>.

Disclaimer: Opinions expressed by the authors and advertisers are not necessarily those of the American Academy of Neurology, its affiliates, or of the Publisher. The American Academy of Neurology, its affiliates, and the Publisher disclaim any liability to any party for the accuracy, completeness, efficacy, or availability of the material contained in this publication (including drug dosages) or for any damages arising out of the use or non-use of any of the material contained in this publication.

Advertising Sales Representatives: Wolters Kluwer, 333 Seventh Avenue, New York, NY 10001. Contacts: Eileen Henry, tel: 732-778-2261, fax: 973-215-2485, Eileen.Henry@wolterskluwer.com and Elizabeth S. Hall, tel: 267-804-8123, liz.hall@wolterskluwer.com. In Europe: Avia Potashnik, Wolters Kluwer, 250 Waterloo Road, London SE1 8RD, UK, tel: +44 (0) 207 981 0722, fax: 44 7919 397 933, Avia. Potashnik@wolterskluwer.com.

Careers & Events: Monique McLaughlin, Wolters Kluwer, Two Commerce Square, 2001 Market Street, Philadelphia, PA 19103, tel: (215) 521-8468, fax: 215-521-8801, Monique.Mclaughlin@wolterskluwer.com.

Reprints: Meredith Edelman, Commercial Reprint Sales, Wolters Kluwer, Two Commerce Square, 2001 Market Street, Philadelphia, PA 19103, tel: 215-555-1212 (office), 215-356-2721 (mobile); meredith.edelman@wolterskluwer.com; reprintsolutions@wolterskluwer.com.

Special Projects: US & Canada: Alan Moore, Wolters Kluwer, Two Commerce Square, 2001 Market Street, Philadelphia, PA 19103, tel: 215-521-8638, Alan.Moore@wolterskluwer.com. International: Andrew Wible, Senior Manager, Rights, Licensing, and Partnerships, Wolters Kluwer, translationrights@wolterskluwer.com.

Postmaster: Send address changes to *Neurology: Clinical Practice*, P.O. Box 1610, Hagerstown, MD 21740

Neurology® Clinical Practice

7 (4)

Neurol Clin Pract 2017;7:e35-376

This information is current as of January 1, 2017

Updated Information & Services	including high resolution figures, can be found at: http://cp.neurology.org/content/7/4.citation.full.html
Permissions & Licensing	Information about reproducing this article in parts (figures,tables) or in its entirety can be found online at: http://cp.neurology.org/misc/about.xhtml#permissions
Reprints	Information about ordering reprints can be found online: http://cp.neurology.org/misc/addir.xhtml#reprintsus

Neurol Clin Pract is an official journal of the American Academy of Neurology. Published continuously since 2011, it is now a bimonthly with 6 issues per year. Copyright . All rights reserved. Print ISSN: 2163-0402. Online ISSN: 2163-0933.

