

Table of Contents



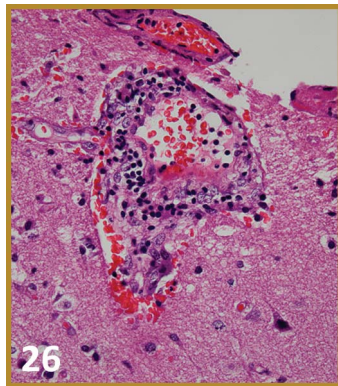
From the Editor's Desk..... **1**

Acknowledgment to Reviewers **2**

Research

Validation of olfactory deficit as a biomarker of Alzheimer disease..... **5**

Matthew R. Woodward, Chaitanya V. Amrutkar, Harshit C. Shah, Ralph H.B. Benedict, Sanjanaa Rajakrishnan, Rachelle S. Doody, Li Yan, and Kinga Szigeti, On behalf of the Texas Alzheimer Research and Care Consortium

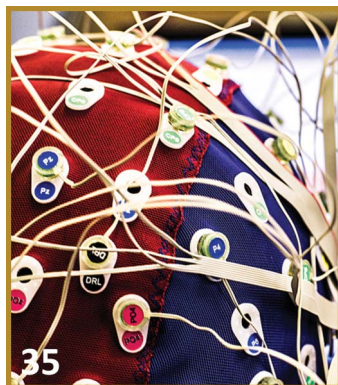


cEEG electrode-related pressure ulcers in acutely hospitalized patients..... **15**

Lidia M.V.R. Moura, Thiago S. Carneiro, David Kwasnik, Valdery F. Moura Junior, Christine S. Blodgett, Joseph Cohen, Mary McKenna Guanci, Daniel B. Hoch, John Hsu, Andrew J. Cole, and M. Brandon Westover

Hemorrhagic primary CNS angiitis and vasoconstrictive drug exposure..... **26**

Mehmet A. Topcuoglu, Ruchira M. Jha, Jacob George, Matthew P. Frosch, and Aneesh B. Singhal

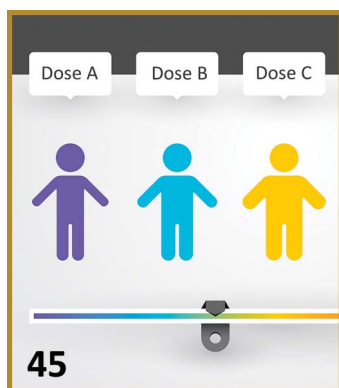


EEG correlates of seizure freedom in genetic generalized epilepsies **35**

Udaya Seneviratne, Ray C. Boston, Mark Cook, and Wendell D'Souza

IV fosphenytoin in obese patients: Dosing strategies, safety, and efficacy **45**

Sarah L. Clark, Megan R. Leloux, Ross A. Dierkhising, Gregory D. Cascino, and Sara E. Hocker



Clinicoradiologic features distinguish tumefactive multiple sclerosis from CNS neoplasms..... 53

Xuling Lin, Wai-Yung Yu, Lishya Liauw, Russell Jude Chander, Weiling E. Soon, Hwei Yee Lee, and Kevin Tan

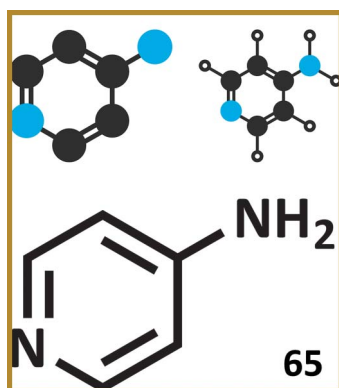
Reviews

Aminopyridines for the treatment of neurologic disorders 65

Michael Strupp, Julian Teufel, Andreas Zwergal, Roman Schniepp, Kamran Khodakhah, and Katharina Feil

Treatment options for obstructive sleep apnea 77

Patrick Pavwoski and Anita Valanju Shelgikar



OPEN Optimizing extended-release carbidopa/levodopa in Parkinson disease: Consensus on conversion from standard therapy 86

Alberto J. Espay, Fernando L. Pagan, Benjamin L. Walter, John C. Morgan, Lawrence W. Elmer, Cheryl H. Waters, Pinky Agarwal, Rohit Dhall, William G. Ondo, Kevin J. Klos, and Dee E. Silver

Cases

Recurrent stroke in a patient with vitamin B₁₂ deficiency and *MTHFR* mutation e1

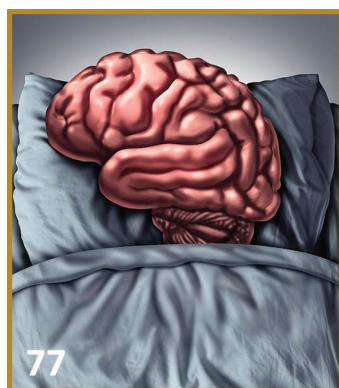
George Zacharia, Dana Shani, and Rafael A. Ortiz

Refractory status epilepticus secondary to atypical Rasmussen encephalitis successfully managed with aggressive immunotherapy e5

Sung-Min Cho, Andrew Zeft, Elia Pestana Knight, Prakash Kotagal, Elaine Wyllie, and Ahsan N.V. Moosa

Acute hemichorea as unusual first multiple sclerosis presentation e9

Giada Giovannini, Francesco Cavallieri, Stefano Meletti, Annalisa Chiari, Jessica Mandrioli, Diana Ferraro, and Franco Valzania



Publication Information

Neurology® is a registered trademark of the American Academy of Neurology (registration valid in the United States). *Neurology*® Clinical Practice (ISSN 2163-0402) is published 6 times per year for the American Academy of Neurology, 201 Chicago Avenue, Minneapolis, MN 55415, by Wolters Kluwer Health, Inc. at 14700 Citicorp Drive, Bldg 3, Hagerstown, MD 21742. Business offices are located at Two Commerce Square, 2001 Market St., Philadelphia, PA 19103. Production offices are located at 351 West Camden Street, Baltimore, MD 21201-2436. © 2017 American Academy of Neurology.

Annual Subscription Rates: United States: \$378.00 Individual, \$766.00 Institution, \$133.00 In-training. Outside the United States: \$418.00 Individual, \$772.00 Institution, \$139.00 In-training. Single copy rate \$128.00. United States residents of AL, CO, DC, FL, GA, HI, IA, ID, IN, KS, KY, LA, MD, MO, ND, NM, NV, PR, RI, SC, SD, UT, VT, WA, WV add state sales tax. The GST tax of 7% must be added to all orders shipped to Canada (Wolters Kluwer's GST Identification #895524239, Publications Mail Agreement #1119672). Subscription prices outside the United States must be prepaid. Prices subject to change without notice. Visit us online at www.lww.com.

Individual and in-training subscription rates include print and access to the online version. Institutional online subscriptions can be purchased through Ovid by contacting the publisher. Please contact Wolters Kluwer, Wolters Kluwer Health, Inc. at 14700 Citicorp Drive, Bldg 3, Hagerstown, MD 21742; phone 800-638-3030 (outside the United States 301-223-2300); fax 301-223-2400.

Address for non-member subscription information, orders, or change of address: Wolters Kluwer, P.O. Box 1610, Hagerstown, MD 21740; phone 800-638-3030 (outside the United States 301-223-2300; fax 301-223-2400). In Japan, contact LWW Igaku-Shoin Ltd., 3-23-14 Hongo, Bunkyo-ku, Tokyo 113-0033; phone 81-3-5689-5400; fax 81-3-5689-5402. In Bangladesh, India, Nepal, Sri Lanka, and Pakistan, contact Globe Publications Pvt. B-13 3rd Floor, A Block, Shopping Complex, Naraina Vihar, Ring Road, New Delhi, 110028; phone 91-11-579-3211; fax 91-11-579-8876.

Address for member subscription information, orders, or change of address: *Neurology: Clinical Practice* is a benefit of membership to the American Academy of Neurology. To become a member or provide a change of address, please contact the American Academy of Neurology, 201 Chicago Avenue, Minneapolis, MN 55415 (or call 612-928-6000). For all other membership inquiries, contact Wolters Kluwer Customer Service Department, P.O. Box 1610, Hagerstown, MD 21740; phone 800-638-3030 (outside the United States 301-223-2300); fax 301-223-2400; e-mail memberservice@lww.com. Please indicate training status and name of institution. Institutional rates apply to libraries, hospitals, corporations, and partnerships of three or more individuals. Prices are subject to change without notice. Subscriptions will begin with currently available issue unless otherwise requested. Copies will be replaced without charge if the publisher receives a request within 90 days of the mailing date.

Copyright and Permission Information: No portion(s) of the work(s) may be reproduced without written consent from Wolters Kluwer. Permission to reproduce copies of articles for non-commercial and commercial use may be obtained from Rightslink which can be found at the article level under Request Permission. Alternatively, send an email to healthpermissions@wolterskluwer.com. General information about permissions can be found on <https://www.lww.com/journal-permission>.

Disclaimer: Opinions expressed by the authors and advertisers are not necessarily those of the American Academy of Neurology, its affiliates, or of the Publisher. The American Academy of Neurology, its affiliates, and the Publisher disclaim any liability to any party for the accuracy, completeness, efficacy, or availability of the material contained in this publication (including drug dosages) or for any damages arising out of the use or non-use of any of the material contained in this publication.

Advertising Sales Representatives: Wolters Kluwer, 333 Seventh Avenue, New York, NY 10001. Contacts: Eileen Henry, tel: 732-778-2261, fax: 973-215-2485, Eileen.Henry@wolterskluwer.com and Hilary Druker, cell: 609-304-9187, fax: 215-754-4912, hilary.druker@wolterskluwer.com. In Europe: Avia Potashnik, Wolters Kluwer, 250 Waterloo Road, London SE1 8RD, UK, tel: +44 (0) 207 981 0722, fax: 44 7919 397 933, Avia.Potashnik@wolterskluwer.com.

Careers & Events: Monique McLaughlin, Wolters Kluwer, Two Commerce Square, 2001 Market Street, Philadelphia, PA 19103, tel: (215) 521-8468, fax: 215-521-8801, Monique.McLaughlin@wolterskluwer.com.

Reprints: Meredith Edelman, Commercial Reprint Sales, Wolters Kluwer, Two Commerce Square, 2001 Market Street, Philadelphia, PA 19103, tel: 215-555-1212 (office), 215-356-2721 (mobile); meredith.edelman@wolterskluwer.com; reprintsolutions@wolterskluwer.com.

Special Projects: US & Canada: Alan Moore, Wolters Kluwer, Two Commerce Square, 2001 Market Street, Philadelphia, PA 19103, tel: 215-521-8638, Alan.Moore@wolterskluwer.com. International: Andrew Wible, Senior Manager, Rights, Licensing, and Partnerships, Wolters Kluwer, translationrights@wolterskluwer.com.

Postmaster: Send address changes to *Neurology: Clinical Practice*, P.O. Box 1610, Hagerstown, MD 21740

Neurology® Clinical Practice

7 (1)

Neurol Clin Pract 2017;7:e9-93

This information is current as of January 1, 2017

Updated Information & Services	including high resolution figures, can be found at: http://cp.neurology.org/content/7/1.citation.full.html
Permissions & Licensing	Information about reproducing this article in parts (figures,tables) or in its entirety can be found online at: http://cp.neurology.org/misc/about.xhtml#permissions
Reprints	Information about ordering reprints can be found online: http://cp.neurology.org/misc/addir.xhtml#reprintsus

Neurol Clin Pract is an official journal of the American Academy of Neurology. Published continuously since 2011, it is now a bimonthly with 6 issues per year. Copyright . All rights reserved. Print ISSN: 2163-0402. Online ISSN: 2163-0933.

