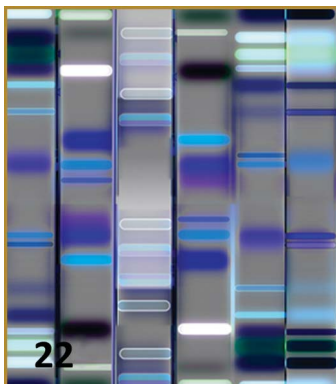
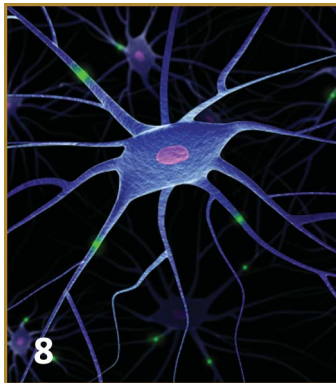
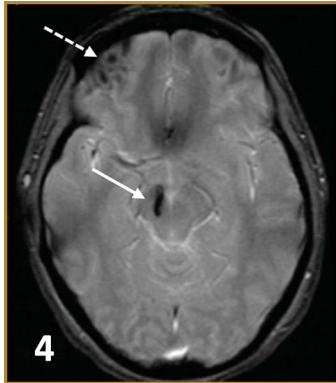


# Table of Contents



**From the Editor's Desk**..... 1

**The Nerve! Readers Speak**..... 2

**Clinical and Ethical Challenges**

**Hemiparkinsonism after unilateral traumatic midbrain hemorrhage in a young woman**..... 4

Sami I. Harik, Jomana T. Al-Hinti, R. Lee Archer, and Edgardo J.C. Angtuaco

**EMG/NCS in the evaluation of spine trauma with radicular symptoms**..... 8

James A. Charles and Nizar Souayah

**Restricted diffusion preceding gadolinium enhancement in large or tumefactive demyelinating lesions**..... 15

Megan Hyland, Robert A. Bermel, and Jeffrey A. Cohen

**Five New Things**

**Non-Parkinson movement disorders: Five new things**..... 22

Mark S. LeDoux

**Neurology and the military: Five new things**..... 30

Jack W. Tsao, Aimee L. Alphonso, Sarah C. Griffin, Ilana R. Yurkiewicz, and Geoffrey S.F. Ling

**Eye on Practice**

**A personal journey in advocacy**..... 39

Lily Jung Henson and Eugene F. May



**Quality measures for neurologists: Financial and practice implications ..... 44**

Adam B. Cohen, Amy E. Sanders, Rebecca J. Swain-Eng, Gina Gjorvad, Sarah T. Tonn, Christopher T. Bever, Jr., and Eric M. Cheng

**Mobile medical applications in neurology ..... 52**

Adam B. Cohen, Brian V. Nahed, and Kevin N. Sheth

**Supreme Court decision on the Affordable Care Act: What does it mean for neurology? ..... 61**

Elaine C. Jones

**Drugs and Devices**

**Alternative devices for obstructive sleep apnea..... 67**

Daniel A. Barone



**Current Controversies**

**Formularies, costs, and quality of care: Formulary restrictions are not the answer, especially for epilepsy..... 71**

David M. Labiner and Kendra W. Drake

**Formularies, costs, and quality of care: Limiting formularies is not harmful to patients ..... 75**

William N. Jones

**Cases**

**Artificial pearls in the brain..... 78**

Ririko Takeda and Hiroki Kurita

**The man with hemi-cape dysesthesias ..... 80**

Christopher R. Leon-Guerrero and Joel C. Morgenlander

**Brain and spinal manifestations of Miller-Dieker syndrome ..... 82**

David T. Hsieh, Melanie M. Jennesson, Elizabeth A. Thiele, Paul A. Caruso, Peter T. Masiakos, and Ann-Christine Duhaime

**Topographic disorientation following mesial left temporo-occipital hemorrhage ..... 84**

Lama M. Chahine



*Neurology*® is a registered trademark of the American Academy of Neurology (registration valid in the United States). *Neurology*® Clinical Practice (ISSN 2163-0402) is published 6 times per year for the American Academy of Neurology, 201 Chicago Avenue, Minneapolis, MN 55415, by Lippincott Williams & Wilkins, 16522 Hunters Green Parkway, Hagerstown, MD 21740-2116. Business offices are located at Two Commerce Square, 2001 Market St., Philadelphia, PA 19103. Production offices are located at 351 West Camden Street, Baltimore, MD 21201-2436. Periodicals postage paid at Hagerstown, MD and at additional mailing offices. © 2013 American Academy of Neurology.

**Annual Subscription Rates:** United States: \$329.00 Individual, \$604.00 Institution, \$114.00 In-training. Outside the United States: \$375.00 Individual, \$679.00 Institution, \$114.00 In-training. Single copy rate \$89.00. All prices include a handling charge. Subscriptions outside of North America must add \$13.00 for airfreight delivery. United States residents of AL, CO, DC, FL, GA, HI, IA, ID, IN, KS, KY, LA, MD, MO, ND, NM, NV, PR, RI, SC, SD, UT, VT, WA, WV add state sales tax. The GST tax of 7% must be added to all orders shipped to Canada (Lippincott Williams & Wilkins' GST Identification #895524239, Publications Mail Agreement #1119672). Subscription prices outside the United States must be prepaid. Prices subject to change without notice. Visit us online at [www.lww.com](http://www.lww.com).

Individual and in-training subscription rates include print and access to the online version. Institutional online subscriptions can be purchased through Ovid by contacting the publisher. Please contact Lippincott Williams & Wilkins, 16522 Hunters Green Parkway, Hagerstown, MD 21740-2116; phone 800-638-3030 (outside the United States 301-223-2300); fax 301-223-2400.

Address for non-member subscription information, orders, or change of address: Lippincott Williams & Wilkins, P.O. Box 1580, Hagerstown, MD 21741-1580; phone 800-638-3030 (outside the United States 301-223-2300); fax 301-223-2400. In Japan, contact LWW Igaku Shoin Ltd., 3-23-14 Hongo, Bunkyo-ku, Tokyo 113-0033; phone 81-3-5689-5400; fax 81-3-5689-5402. In Bangladesh, India, Nepal, Sri Lanka, and Pakistan, contact Globe Publications Pvt. B-13 3rd Floor, A Block, Shopping Complex, Naraina Vihar, Ring Road, New Delhi, 110028; phone 91-11-579-3211; fax 91-11-579-8876.

**Address for member subscription information, orders, or change of address:** *Neurology: Clinical Practice* is a benefit of membership to the American Academy of Neurology. To become a member or provide a change of address, please contact the American Academy of Neurology, 201 Chicago Avenue, Minneapolis, MN 55415 (or call 612-928-6000). For all other membership inquiries, contact Lippincott Williams & Wilkins Customer Service Department, P.O. Box 1580, Hagerstown, MD 21741-1580; phone 800-638-3030 (outside the United States 301-223-2300); fax 301-223-2400; e-mail [memberservice@lww.com](mailto:memberservice@lww.com). Please indicate training status and name of institution. Institutional rates apply to libraries, hospitals, corporations, and partnerships of three or more individuals. Prices are subject to change without notice. Subscriptions will begin with currently available issue unless otherwise requested. Copies will be replaced without charge if the publisher receives a request within 90 days of the mailing date.

**Copyright and Permission Information:** No portion(s) of the work(s) may be reproduced without written consent from Lippincott Williams & Wilkins. Permission to reproduce copies of articles for noncommercial use may be obtained from the Copyright Clearance Center, 222 Rosewood Drive, Danvers, MA 01923, (978) 750-8400, fax (978) 750-4470, [www.copyright.com](http://www.copyright.com). For all other use, please go to the Journal website and click the 'Request Permissions' link in the Services box for the relevant article. Alternatively send an email to [customer-care@copyright.com](mailto:customer-care@copyright.com). Translation Rights & Licensing queries: Please contact, Silvia Serra, Translations Rights, Licensing & Permissions Manager, Wolters Kluwer Health (Medical Research) Ltd, 250 Waterloo Road, London SE1 8RD, UK. Phone +44 (0)207 981 0600; [Silvia.Serra@wolterskluwer.com](mailto:Silvia.Serra@wolterskluwer.com).

**Disclaimer:** Opinions expressed by the authors and advertisers are not necessarily those of the American Academy of Neurology or of the Publisher. Both the American Academy of Neurology and the Publisher disclaim any liability to any party for the accuracy, completeness, or availability of the material contained herein or for any damages arising out of the use or non-use of any of the material contained herein.

**Advertising Sales Representatives:** Lippincott Williams & Wilkins, 333 Seventh Avenue, New York, NY 10001. Contacts: Eileen Henry-Hubert, tel: 732-778-2261, fax: 973-215-2485, [eileen.henry-hubert@wolterskluwer.com](mailto:eileen.henry-hubert@wolterskluwer.com) and Valentin Torres, tel: 646-674-6354, cell: 646-628-4530, fax: 917-677-8420, [Valentin.Torres@wolterskluwer.com](mailto:Valentin.Torres@wolterskluwer.com). In Europe: The Point of Difference, Ltd., 4 Chase Side Avenue, London SW20 8LU, UK, tel: 44 20 8542 3200, fax: 44 20 8543 3810, [pointofdiff@btinternet.com](mailto:pointofdiff@btinternet.com).

**Careers & Events:** Mike Rusch, Lippincott Williams & Wilkins, Two Commerce Square, 2001 Market St., Philadelphia, PA 19103, tel: 215-521-8404, cell: 215-370-4226, fax: 215-689-2453, [Mike.Rusch@wolterskluwer.com](mailto:Mike.Rusch@wolterskluwer.com).

**Reprints:** Mary Beth Koenig, Lippincott Williams & Wilkins, Two Commerce Square, 2001 Market Street, Philadelphia, PA 19103, tel: 215-521-8739, [MaryBeth.Koenig@wolterskluwer.com](mailto:MaryBeth.Koenig@wolterskluwer.com). International: Silvia Serra, Wolters Kluwer Health, 250 Waterloo Road, London SE1 8RD, UK, tel: 44 (0)207 981 0600, [Silvia.Serra@wolterskluwer.com](mailto:Silvia.Serra@wolterskluwer.com).

**Special Projects:** US & Canada: Alan Moore, Lippincott Williams & Wilkins, Two Commerce Square, 2001 Market Street, Philadelphia, PA 19103, tel: 215-521-8638, [Alan.Moore@wolterskluwer.com](mailto:Alan.Moore@wolterskluwer.com). International: Silvia Serra, Wolters Kluwer Health, 250 Waterloo Road, London SE1 8RD, UK, tel: 44 (0)207 981 0600, [Silvia.Serra@wolterskluwer.com](mailto:Silvia.Serra@wolterskluwer.com).

**Postmaster:** Send address changes to *Neurology: Clinical Practice*, P.O. Box 1550, Hagerstown, MD 21740.

# Neurology® Clinical Practice

3 (1)

*Neurol Clin Pract* 2013;3;1-85

**This information is current as of February 1, 2013**

<b>Updated Information &amp; Services</b>	including high resolution figures, can be found at: <a href="http://cp.neurology.org/content/3/1.citation.full.html">http://cp.neurology.org/content/3/1.citation.full.html</a>
<b>Permissions &amp; Licensing</b>	Information about reproducing this article in parts (figures,tables) or in its entirety can be found online at: <a href="http://cp.neurology.org/misc/about.xhtml#permissions">http://cp.neurology.org/misc/about.xhtml#permissions</a>
<b>Reprints</b>	Information about ordering reprints can be found online: <a href="http://cp.neurology.org/misc/addir.xhtml#reprintsus">http://cp.neurology.org/misc/addir.xhtml#reprintsus</a>

*Neurol Clin Pract* is an official journal of the American Academy of Neurology. Published continuously since 2011, it is now a bimonthly with 6 issues per year. Copyright . All rights reserved. Print ISSN: 2163-0402. Online ISSN: 2163-0933.

