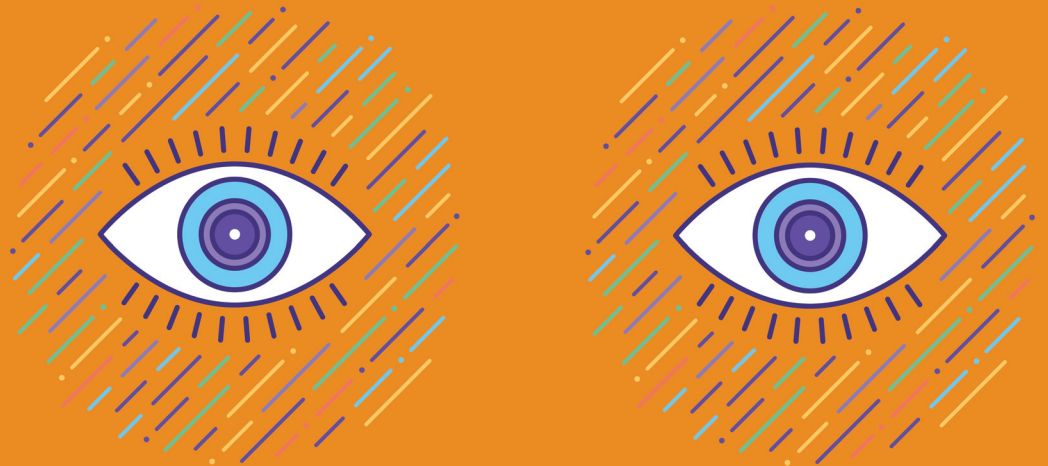


# Neurology® Clinical Practice

A peer-reviewed clinical neurology journal for the practicing neurologist



## RESEARCH

Visual tests predict dementia risk in Parkinson disease **29**

## REVIEW

Primary CNS lymphoma initially diagnosed as vasculitis **84**

## RESEARCH

Painful diabetic peripheral neuropathy:  
Health care costs and complications **47**

## RESEARCH

Assessment of Parkinson disease quality  
measures on 12-month patient outcomes **58**

# Neurology® Clinical Practice

10 (1)

*Neurol Clin Pract* 2020;10:e5-88

**This information is current as of January 1, 2020**

<b>Updated Information &amp; Services</b>	including high resolution figures, can be found at: <a href="http://cp.neurology.org/content/10/1.citation.full.html">http://cp.neurology.org/content/10/1.citation.full.html</a>
<b>Permissions &amp; Licensing</b>	Information about reproducing this article in parts (figures, tables) or in its entirety can be found online at: <a href="http://cp.neurology.org/misc/about.xhtml#permissions">http://cp.neurology.org/misc/about.xhtml#permissions</a>
<b>Reprints</b>	Information about ordering reprints can be found online: <a href="http://cp.neurology.org/misc/addir.xhtml#reprintsus">http://cp.neurology.org/misc/addir.xhtml#reprintsus</a>

*Neurol Clin Pract* is an official journal of the American Academy of Neurology. Published continuously since 2011, it is now a bimonthly with 6 issues per year. Copyright . All rights reserved. Print ISSN: 2163-0402. Online ISSN: 2163-0933.

