

Table of Contents



From the Editor's Desk 1

The Nerve! Readers Speak 2

Clinical and Ethical Challenges

Advising patients about obtaining genomic profiles... 5

Donna T. Chen and Lois L. Shepherd

Treating patients with medically resistant epilepsy 14

Gregory L. Krauss and Michael R. Sperling

The evaluation of a patient with dizziness 24

Kevin A. Kerber and Robert W. Baloh

Five New Things

Critical care neurology: Five new things 34

Eelco F.M. Wijdicks and Alejandro A. Rabinstein

Neurogenetics: Five new things 41

Suman Jayadev, Corrine O. Smith, and Thomas D. Bird



Eye on Practice

Global imperatives and challenges facing the practice of neurology 49

Robert C. Griggs, Bertrand Fontaine, and Gen Sobue

Neurohospitalist: A newly popular career choice 55

S. Andrew Josephson and Vanja C. Douglas



New Drugs and Devices

Fingolimod 61

Megan H. Hyland and Jeffrey A. Cohen

Current Controversies

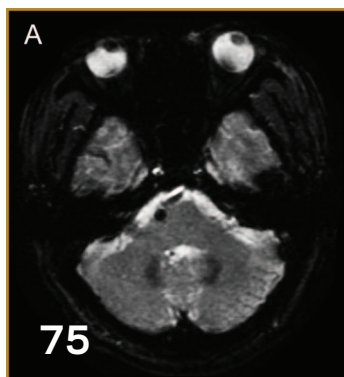
Multiple sclerosis therapeutic strategies: Use second-line agents as first-line agents when time is of the essence 66

Mark S. Freedman

Multiple sclerosis therapeutic strategies: Start safe and effective, reassess early, and escalate if necessary 69

Robert T. Naismith

Cases



Cefepime neurotoxicity can mimic postanoxic coma with myoclonic status epilepticus..... 73

Sara Hocker and Alejandro A. Rabinstein

Can cerebral microbleeds cause an acute stroke syndrome? 75

James T.H. Teo, Hawraman Ramadan, Simone M. Gregoire,
Sana Mufti, Gideon Lipman, H. Rolf Jäger, Nicholas Losseff, and
David Werring

Lipoma of trigeminal nerve in a patient with severe trigeminal neuralgia 78

Jyoti Sureka, Sanuj Panwar, and Ravi Kanth Jakkani

Neurology® is a registered trademark of the American Academy of Neurology (registration valid in the United States). Neurology® Clinical Practice (ISSN 2163-0402) is published 4 times per year for the American Academy of Neurology, 1080 Montreal Avenue, St. Paul, MN 55116, by Lippincott Williams & Wilkins, 16522 Hunters Green Parkway, Hagerstown, MD 21740-2116. Business offices are located at Two Commerce Square, 2001 Market St., Philadelphia, PA 19103. Production offices are located at 351 West Camden Street, Baltimore, MD 21201-2436. Periodicals postage paid at Hagerstown, MD and at additional mailing offices. Copyright © 2011 by AAN Enterprises, Inc.

Annual Subscription Rates: United States: \$261.00 Individual, \$411.00 Institution, \$107.00 In-training. Outside the United States: \$309.00 Individual, \$474.00 Institution, \$77.00 In-training. Single copy rate \$118.00. All prices include a handling charge. Subscriptions outside of North America must add \$13.00 for airfreight delivery. United States residents of AL, CO, DC, FL, GA, HI, IA, ID, IN, KS, KY, LA, MD, MO, ND, NM, NV, PR, RI, SC, SD, UT, VT, WA, WV add state sales tax. The GST tax of 7% must be added to all orders shipped to Canada (Lippincott Williams & Wilkins' GST Identification #89524239, Publications Mail Agreement #1119672). Subscription prices outside the United States must be prepaid. Prices subject to change without notice. Visit us online at www.lww.com.

Individual and in-training subscription rates include print and access to the online version. Institutional online subscriptions can be purchased through Ovid by contacting the publisher. Please contact Lippincott Williams & Wilkins, 16522 Hunters Green Parkway, Hagerstown, MD 21740-2116; phone 800-638-3030 (outside the United States 301-223-2300); fax 301-223-2400.

Address for non-member subscription information, orders, or change of address: Lippincott Williams & Wilkins, P.O. Box 1580, Hagerstown, MD 21741-1580; phone 800-638-3030 (outside the United States 301-223-2300; fax 301-223-2400. In Japan, contact LWW Igaku-Shoin Ltd., 3-23-14 Hongo, Bunkyo-ku, Tokyo 113-0033; phone 81-3-5689-5400; fax 81-3-5689-5402. In Bangladesh, India, Nepal, Sri Lanka, and Pakistan, contact Globe Publications Pvt. B-13 3rd Floor, A Block, Shopping Complex, Naraina Vihar, Ring Road, New Delhi, 110028; phone 91-11-579-3211; fax 91-11-579-8876.

Address for member subscription information, orders, or change of address: *Neurology: Clinical Practice* is a benefit of membership to the American Academy of Neurology. To become a member or provide a change of address, please contact the American Academy of Neurology, 1080 Montreal Avenue, St. Paul, MN 55116 (or call 651-695-1940). For all other membership inquiries, contact Lippincott Williams & Wilkins Customer Service Department, P.O. Box 1580, Hagerstown, MD 21741-1580; phone 800-638-3030 (outside the United States 301-223-2300); fax 301-223-2400; e-mail memberservice@lww.com. Please indicate training status and name of institution. Institutional rates apply to libraries, hospitals, corporations, and partnerships of three or more individuals. Prices are subject to change without notice. Subscriptions will begin with currently available issue unless otherwise requested. Copies will be replaced without charge if the publisher receives a request within 90 days of the mailing date.

Copyright and Permission Information: No portion(s) of the work(s) may be reproduced without written consent from Lippincott Williams & Wilkins. Permission to reproduce copies of articles for noncommercial use may be obtained from the Copyright Clearance Center, 222 Rosewood Drive, Danvers, MA 01923, (978) 750-8400, fax (978) 750-4470, www.copyright.com. For all other use, please go to the Journal website and click the 'Request Permissions' link in the Services box for the relevant article. Alternatively send an email to customer-care@copyright.com. Translation Rights & Licensing queries: Please contact, Silvia Serra, Translations Rights, Licensing & Permissions Manager, Wolters Kluwer Health (Medical Research) Ltd, 250 Waterloo Road, London SE1 8RD, UK. Phone +44 (0)207 981 0600; Silvia.Serra@wolterskluwer.com.

Disclaimer: Opinions expressed by the authors and advertisers are not necessarily those of the American Academy of Neurology or of the Publisher. Both the American Academy of Neurology and the Publisher disclaim any liability to any party for the accuracy, completeness, or availability of the material contained herein or for any damages arising out of the use or non-use of any of the material contained herein.

Advertising Sales Representatives: Eileen Henry-Hubert, tel: 732-778-2261, fax: 973-215-2485, eileen.henry-hubert@wolterskluwer.com; Philip Redgate, tel: 646-674-6322, cell: 347-899-1287, fax: 215.827.5816, philip.redgate@wolterskluwer.com. In Europe: The Point of Difference, Ltd., 4 Chase Side Avenue, London SW20 8LU, UK, tel: 44 20 8542 3200, fax: 44 20 8543 3810, pointofdiff@btinternet.com.

Careers & Events: Danni Morinich, Lippincott Williams & Wilkins, Two Commerce Square, 2001 Market St., Philadelphia, PA 19103, tel: 215-521-8405, fax: 215-521-8411, Danni.Morinich@wolterskluwer.com

Reprints: Mary Beth Koenig, Lippincott Williams & Wilkins, Two Commerce Square, 2001 Market Street, Philadelphia, PA 19103, tel: 215-521-8739, MaryBeth.Koenig@wolterskluwer.com. In Europe: Special Sales Group, Chowley Oak Lane, Tattenhall, Chester CH3 9GA, UK, tel: 44-(0)-1829-771155, fax: 44-(0)-0129-770330, reprints@pharma.wkhealth.com

Special Projects: US & Canada: Alan Moore, Lippincott Williams & Wilkins, Two Commerce Square, 2001 Market Street, Philadelphia, PA 19103, tel: 215-521-8638, Alan.Moore@wolterskluwer.com. International: Louisa Mott, Lippincott Williams & Wilkins, 250 Waterloo Road, London SE1 8RD, UK, tel: 44 (0) 207 981 0731; fax: 44 (0) 207 981 0701, Louisa.Mott@wolterskluwer.com

Postmaster: Send address changes to *Neurology: Clinical Practice*, P.O. Box 1550, Hagerstown, MD 21740.

Neurology[®] Clinical Practice

1 (1)

Neurol Clin Pract 2011;1;1-79

This information is current as of December 1, 2011

Updated Information & Services	including high resolution figures, can be found at: http://cp.neurology.org/content/1/1.citation.full.html
Supplementary Material	Supplementary material can be found at: http://cp.neurology.org/content/suppl/2011/12/07/1.1.DC1 http://cp.neurology.org/content/suppl/2011/12/07/1.1.DC2
Permissions & Licensing	Information about reproducing this article in parts (figures, tables) or in its entirety can be found online at: http://cp.neurology.org/misc/about.xhtml#permissions
Reprints	Information about ordering reprints can be found online: http://cp.neurology.org/misc/addir.xhtml#reprintsus

Neurol Clin Pract is an official journal of the American Academy of Neurology. Published continuously since 2011, it is now a bimonthly with 6 issues per year. Copyright . All rights reserved. Print ISSN: 2163-0402. Online ISSN: 2163-0933.

