

December 2011

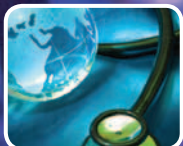
Neurology®



Clinical Practice

Volume 1, Number 1

The Ethics of Genetic Screening



Eye on Practice:
Global challenges



New Drug:
Fingolimod



Clinical Challenge:
Refractory epilepsy

Neurology® Clinical Practice

1 (1)

Neurol Clin Pract 2011;1;1-79

This information is current as of December 1, 2011

Updated Information & Services	including high resolution figures, can be found at: http://cp.neurology.org/content/1/1.citation.full.html
Supplementary Material	Supplementary material can be found at: http://cp.neurology.org/content/suppl/2011/12/07/1.1.DC1 http://cp.neurology.org/content/suppl/2011/12/07/1.1.DC2
Permissions & Licensing	Information about reproducing this article in parts (figures, tables) or in its entirety can be found online at: http://cp.neurology.org/misc/about.xhtml#permissions
Reprints	Information about ordering reprints can be found online: http://cp.neurology.org/misc/addir.xhtml#reprintsus

Neurol Clin Pract is an official journal of the American Academy of Neurology. Published continuously since 2011, it is now a bimonthly with 6 issues per year. Copyright . All rights reserved. Print ISSN: 2163-0402. Online ISSN: 2163-0933.

